



CONNECTING COMMUNITIES

GRANT:
FY2020 BUILD
Transportation
Discretionary Grants

APPLICANT:
Teton County, WY

PROJECT TYPE:
Capital

TOTAL PROJECT COST:
\$28,397,661

**TOTAL CASH
& IN-KIND:**
\$7,031,532 (24.76%)

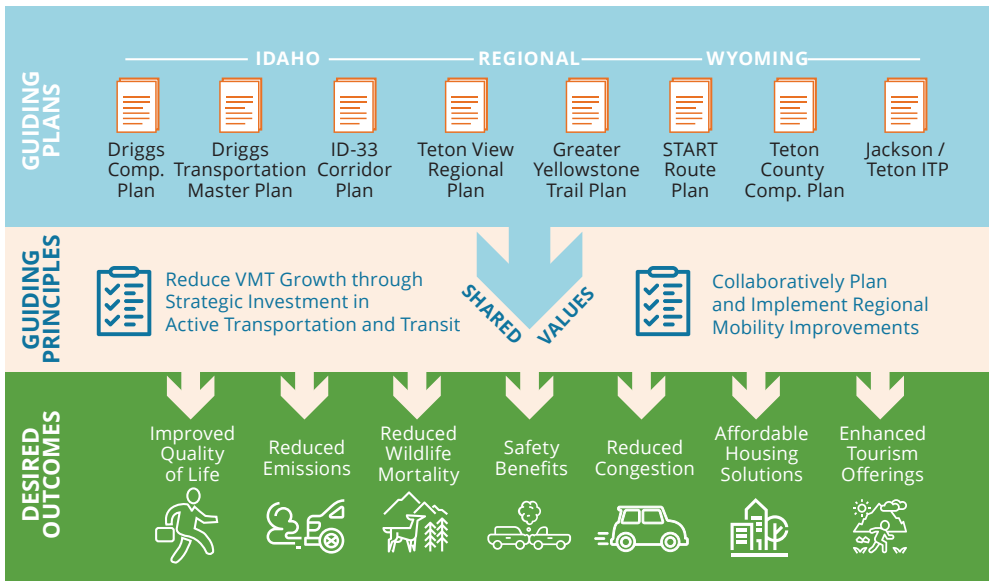
GRANT REQUEST:
\$21,366,129 (75.24%)





Project Location

The Teton Mobility Corridor Improvements (TMCI) project is located in the Greater Yellowstone Region of Idaho and Wyoming, spanning over 30 miles from Driggs, ID to Jackson, WY through the Teton mountain range. Made up of ID-33 and WY-22 state highways, the corridor connects Teton County, ID to Teton County, WY which are collectively part of the Jackson Micropolitan Statistical Area. Grand Teton and Yellowstone National Parks lie to north and attract millions of visitors each year. Over the past decade, these communities have experienced tremendous growth in population and visitation due to their proximity to world-class recreation and open space. This growth has created new pressures and challenges on the ID-33/WY-22 corridor to support the daily needs of residents and tourists visiting the region.



Project Framework

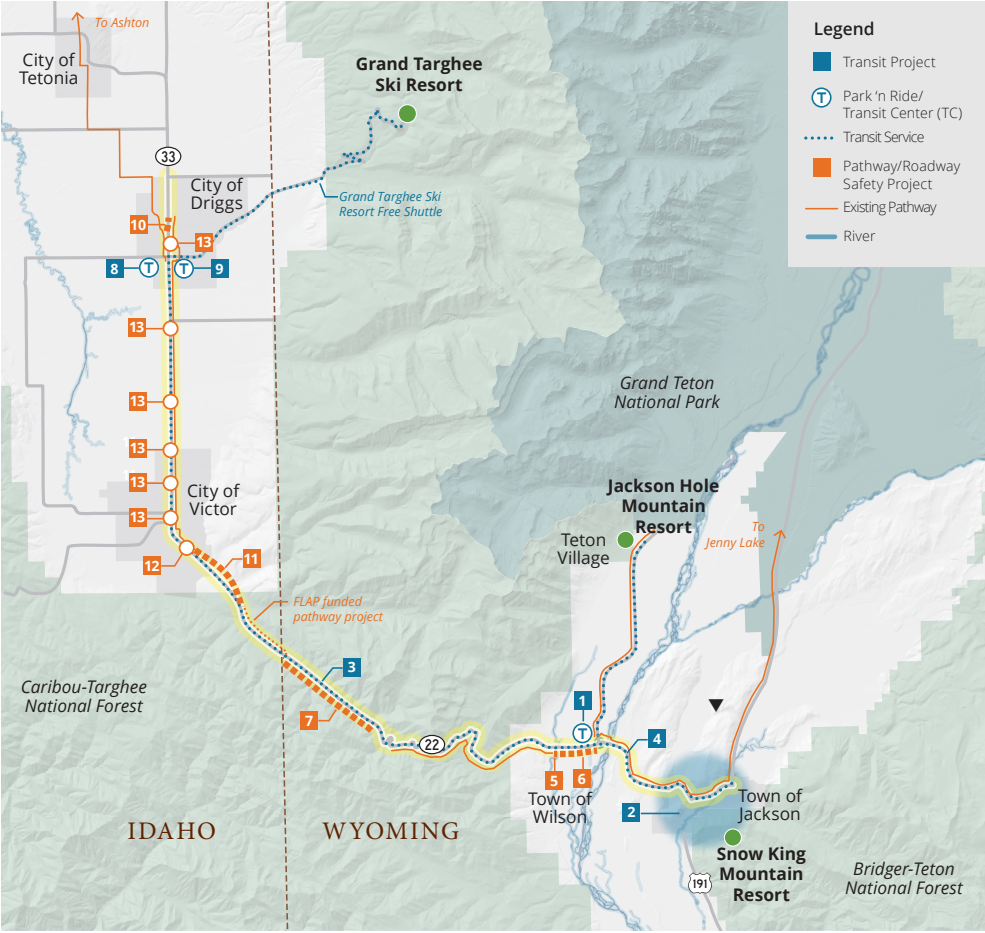
TMCI project components are organized around two key transportation systems along the ID-33/WY-22 corridor. This includes the regional transit system, known as the **Southern Teton Area Rapid Transit (START)** and the regional pathway network which is part of the **Greater Yellowstone Trail**.

Southern Teton Area Rapid Transit (START)

START is the transit provider for the Town of Jackson and Teton County, Wyoming, as well as providing commuter transit service for Teton County, Idaho. Ridership totals over 1,000,000 passengers per year.

Greater Yellowstone Trail Plan (GYT)

The Greater Yellowstone Trail Concept Plan was developed through a collaborative regional planning process that formalized a vision for a world-class regional trail system that would enhance quality of life, provide sustainable transportation options, connect to public land and recreational assets, and spur economic development opportunities along the unique and diverse 180-mile corridor.



Project Map

WYOMING

- 1 Stilson Park Transit Center
- 2 Transit Signal Prioritization
- 3 START Commuter Buses
- 4 START Electric Buses
- 5 GYT: Wilson Active Transportation Improvements
- 6 GYT: Wilson to Snake River Pathway
- 7 GYT: Teton Pass Trail

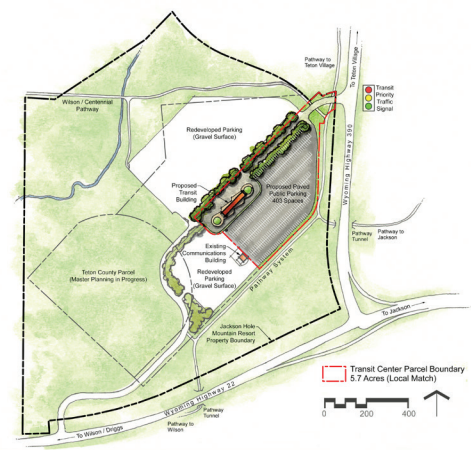
IDAHO

- 8 Driggs Transit Center Park-and-Ride
- 9 5th St. Park-and-Ride
- 10 GYT: ID-33 Pathway to Airport
- 11 GYT: Old Jackson Hwy Advisory Shoulders
- 12 ID-33 Baseline Rd Intersection & Underpass
- 13 ID-33 Turn & Passing Lanes

Key Projects

1 Stilson Park Transit Center ►

Construction of transit center, access road, park 'n ride, pedestrian and bicycle interconnections, covered bike parking and transit priority signal at WY-390.



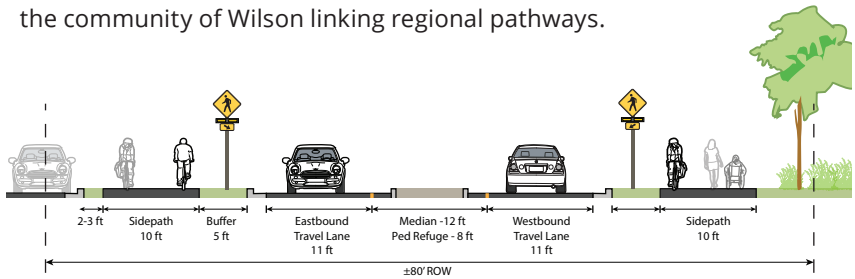
3 START Commuter Buses ►

Purchase of four Commuter coaches, with bike racks, serving the Teton Valley route connecting Teton County, ID to Teton County, WY.



5 GYT: Wilson Active Transportation Improvements ▼

Construction of continuous active transportation facilities along WY-22 through the community of Wilson linking regional pathways.



6 GYT: Wilson to Snake River Pathway ►

Construction of pathway and underpass below WY-22 linking Wilson to the planned Stilson Park Transit Center.



Key Projects

7 GYT: Teton Pass Trail ▶

Construct next phase shared use pathway from Trail Creek Campground to Coal Creek.



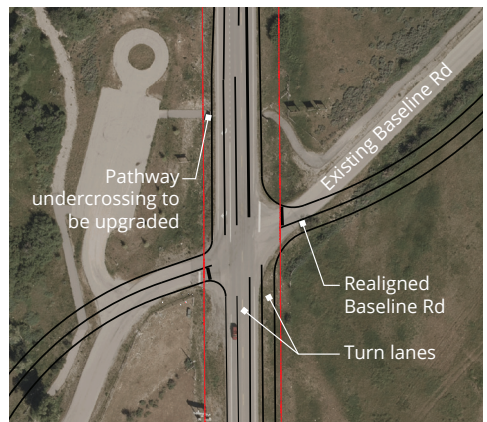
8 Driggs Downtown Transit Center Park-and-Ride ▼

Serves START & Targhee Shuttle. Double capacity by adding 52 park & ride spaces and 2nd bathroom in passenger facility.



12 ID-33 Baseline Rd Intersection & Underpass ▶

Construct turning lanes on SH33 Baseline Road Intersection, and replace pedestrian underpass to comply with ADA.





Funding

Although COVID-19 has extracted a heavy toll on the region's economy, the project partners have assembled a local match of nearly 25% due to the critical importance of the TMCI.

Overall Project Cost	\$28,397,661
Wyoming Project Cost	\$21,639,878
Idaho Project Cost	\$6,757,783
Local Match Provided (24.76%)	\$7,031,532
BUILD Grant Request (75.24%)	\$21,366,129



Benefits

The TMCI will provide comprehensive benefits to communities within Teton Valley, ID and Jackson Hole, WY. These benefits are important as the effects of COVID-19 are felt on local budgets throughout Idaho and Wyoming communities. Benefits from these projects will not only strengthen and hasten economic recovery as visitors return to the region to experience world-class resorts and National Parks, but also optimize and streamline operations for transit while making active transportation trips possible and convenient for local residents.

Project Component	Net Present Value	Benefit-Cost Ratio
Pathway / Roadway Safety Projects	\$23,569,085	2.94
Transit Projects	\$3,001,398	1.22
TMCI- All Project Components	\$26,570,483	2.03

FUNDING PARTNERS:

Teton County, WY

Teton County, ID

City of Driggs, ID

Town of Jackson, WY

Idaho Transportation Department

Southern Teton Area Rapid Transit

Jackson Hole Mountain Resort

SUPPORTING PARTNERS:

Wyoming Department of
Transportation

Grand Targhee Resort

Teton Village Association

Driggs Airport

Driggs Urban Renewal Agency

Wyoming Pathways

Teton Valley Trails and Pathways

Valley Advocates for Responsible
Development



CONNECTING COMMUNITIES